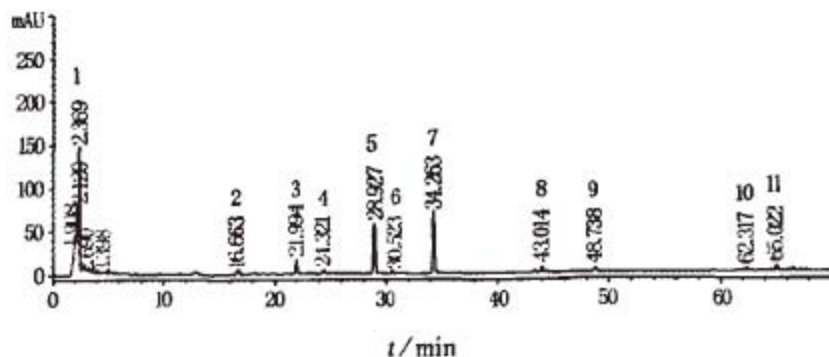
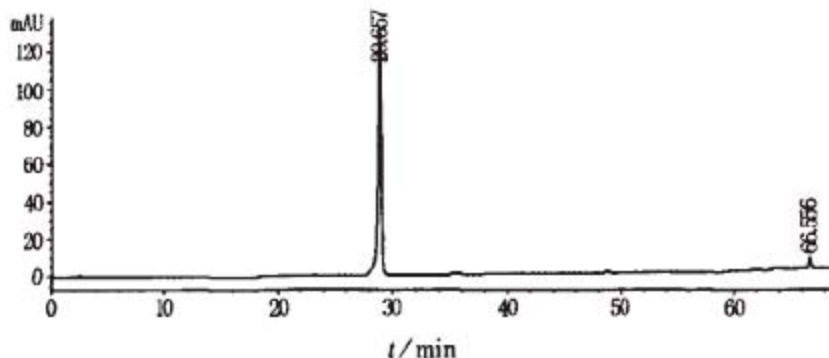


37.罗红霉素



A、玄参药材指纹图谱



B、肉桂酸HPLC图谱

色谱柱: Kromasil 100-5 C18, 250 × 4.6mm

流动相: 0.1%甲酸水溶液:甲醇 梯度洗脱

流速: 1.0毫升/分钟

进样量: 20 μ l(样品浓度15 μ g/1ml)

温度: 30 $^{\circ}$ C

检测器: UV 280nm